

Logan reserve

The Banks

\$461,895

MetInvest | **m**
metricon

Lot 114, Sundew Place, Land size 356 sqm²



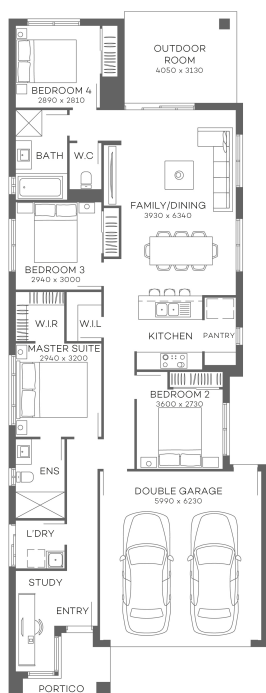
4



2



2



To secure this lot in stage 1:

- Filled and signed MetInvest EOI Form
- \$2,000 initial deposit payable to developer trust account
- Provide pre-approval loan letter
- Balance on settlement

Specifications

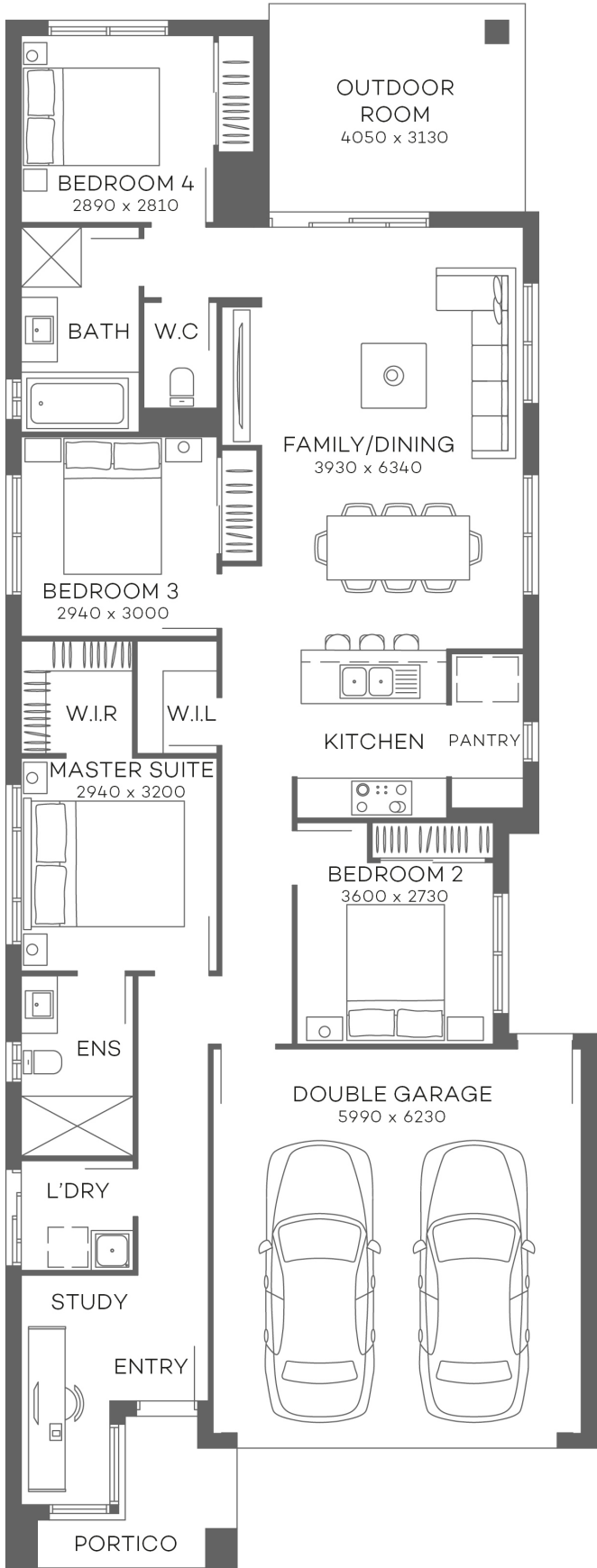
	4	2	2
Property Type	House & Land		
Contract Type	2 Part Contract		
Titled	Yes		
Land Area	356 sqm		
Total House Area	182.38 sqm		
Land Price	\$207,000		
House Price	\$254,895		
Total Price	\$461,895		
Design	Mocha 20		
Facade	Mode		
Reservation Deposit	\$2,000		
Specification	The Breeze Series Qld Specifications		



Sales Partner: Gilbert Elliott
 0418 792 215
 gil@positiveincome.com.au



Metricon has made all reasonable efforts to ensure the accuracy of this House and Land package and information provided, however the purchaser should make their own enquiries. Images may depict items not supplied by Metricon, full details are available from our consultants. The determined house sitting on this lot is at the discretion of Metricon Homes only. No variations will be accepted. Pricing does not include Stamp Duty on the Land or any legal fees associated with the Building or Land Contract. Price current at the time of publication. Metricon reserves the right to change the price or withdraw this House and Land Package at any time without notice. Land not supplied by Metricon - land developers terms and conditions apply. Metricon Homes Qld Pty Ltd ACN 005 149 137 QBCC Licence 40992 NSW Licence 36654C



METRICON STANDARD INCLUSIONS

Effective date 29/06/2019 REV 6

PRE-CONSTRUCTION

- ✓ HIA fixed price contract.
- ✓ Plans and Specifications.
- ✓ Engineers soil report and slab design.
- ✓ Contour survey.
- ✓ Council building and plumbing application fees and charges (standard applications in Qld based on Brisbane City Council, standard applications in NSW based on Tweed Shire Council, excluding town planning, relaxations).
- ✓ Water connection fees (excludes water meter installation if required).
- ✓ Pre-determined colour scheme by Metricon Studio M décor designers.

SITE WORKS, FOUNDATIONS & CONNECTIONS

- ✓ Site scrape and/or balanced cut & fill excavation for up to 500mm site fall over the building platform.
- ✓ Removal of vegetation and/or excess spoil.
- ✓ Waffle pod concrete slab up to H2 soil classification.
- ✓ Bulk concrete bored piercing (if required) to suit balanced cut & fill excavation for up to 500mm site fall over the building platform.
- ✓ Termite treatment to slab penetrations and physical perimeter barrier.
- ✓ Sewer & Stormwater connections to existing serviceable connection points.
- ✓ Surface drains including dedicated stormwater line
- ✓ Electrical mains run in.
- ✓ Water connection from pre-tapped water main.
- ✓ House constructed for wind rating conditions up to N3 (w41).
- ✓ No allowance for retaining walls.

ENERGY EFFICIENCY

- ✓ Ceiling insulation batts rating R3.0 to ceiling area as required.
- ✓ Sisalation "Wall-wrap" and R1.5 insulation batts to external stud walls.
- ✓ Energy efficient aluminium windows and sliding door units.
- ✓ Weather stripping to hinged external Front and Laundry doors.
- ✓ WELS rated water saving shower heads and tap ware.
- ✓ Chromagen 170 litre heat pump hot water unit to standard home.
- ✓ 500 KPA Water Pressure Limiting Device.

BRICKS, WINDOWS, ROOF & GARAGE

- ✓ Extensive range of clay bricks from the Builders standard range.
- ✓ Natural mortar with raked joints.
- ✓ Powder coated aluminium windows and sliding doors with clear glass also satin-lite glass to wet areas.
- ✓ Keyed window locks to all opening sashes and sliding doors.
- ✓ Flyscreens to all front façade opening window sashes.
- ✓ Safety screens to all side and rear opening window sashes and sliding doors, excluding Garage sliding door if applicable.
- ✓ Colorbond Slimline automatic Panelift door with one wireless wall mounted button and two hand sets, to the front facade of the standard home Garage in the standard Builders range of colours.

- ✓ Colorbond fascia, gutter, downpipes and roof, with rotary vent and snap on eave vents (if required)

KITCHEN FEATURES

- ✓ Melamine finish cupboards with 20mm reconstituted stone bench tops in the standard Builders range of colours and door handles.
- ✓ Contrasting Melamine colour.
- ✓ Provision for dishwasher with cold water connection and single power point.
- ✓ Provision for future microwave with pot drawer under and single power point.
- ✓ Clark Punch 1.75 end bowl stainless steel sink – PU1207
- ✓ Clark "Round Pin" chrome sink mixer tap – CL10006C4A.

For Homes < 170 m2

For Homes > 170 m2

- | | |
|--|--|
| ✓ 600mm Bellissimo by Technika stainless steel/black glass electric oven TB60FDTSS-5 | 900mm Technika stainless steel/black glass electric oven T948SS-5 |
| ✓ 600mm Technika electric ceramic cooktop CFE641-5 | 900mm Technika electric ceramic cooktop CFE942-5 |
| ✓ 600mm Technika stainless steel ducted canopy rangehood CHEM52A6S-2 | 900mm Technika stainless steel ducted canopy rangehood CHEM52C9S-2 |
| ✓ Bellissimo by Technika stainless steel dishwasher TBD4SS-5 | |
| ✓ Cold water tap to refrigerator space. | |

BATHROOM, ENSUITE & TOILETS FEATURES

- ✓ Melamine finish vanities with 20mm reconstituted stone bench tops in the standard Builders range of colours and door handles.
- ✓ Clear laminated glass shower screens with powder coated aluminium frame from Builders range of colours.
- ✓ 1100mm high polished edge mirrors with width as per plans.
- ✓ Clark "Round" 1525 white bath – CL50001.W4TF.
- ✓ Clark "Square Inset" 400mm vanity basins with single taphole landing in white with chrome pop up waste – CL40013.W1.
- ✓ Clark "Round Pin" chrome wall mixer with trim kit to shower – CL10027.C.
- ✓ Clark "Round Pin" chrome wall mixer with trim kit to bath – CL10027.C.
- ✓ Clark "Round Pin" mixer to vanity basins – CL10001.C5A.
- ✓ Caroma "Tasman II" chrome hob mounted bath spout - 992539C.
- ✓ Clark "Round Basic" chrome rail shower – CL10058.C3A.
- ✓ Clark "Round" chrome single towel rail 900mm long maximum - CL60021.C.
- ✓ Clark Round chrome single towel rail 300mm long where required in standard design home – CL60019.C
- ✓ Clark "Round" chrome toilet roll holders – CL60016.C.
- ✓ Stylus "Prima II" close coupled toilet suite with soft close seat - PRI400SC.
- ✓ Round chrome metal floor wastes where required.

LAUNDRY FEATURES

- ✓ Clark "Utility" 42 standard Laundry tub and cabinet – F6001.
- ✓ Washing Machine cocks with non-return valve, installed under cabinet – MT2015.
- ✓ Tasman II wall mounted chrome tapware to Laundry tub – 992534C4A.
- ✓ Round chrome metal floor waste where required.

CERAMIC TILING

- ✓ Ceramic tiles to be chosen from Builders Preferred Suppliers standard Builders Range.
- ✓ Bathroom and Ensuite floors, 2000mm high to showers, 400mm above bath and skirting tile.
- ✓ Kitchen splash back as per standard plan.
- ✓ Water closet and Laundry floors, splash back over tub and skirting tiles as per standard plan.
- ✓ Main floor (refer working drawings), Portico/Porch and Alfresco areas.
- ✓ No allowance has been made for frieze or decorator tiles.
- ✓ No allowance has been made for laying of border tiles, 45 degree patterns or floor feature tile layouts.

ELECTRICAL

- ✓ Safety switches & circuit breakers.
- ✓ Single phase underground power connection from existing supply point. Meter box will be installed on the side nearest mains connection point.
- ✓ One (1) single power point to dishwasher provision.
- ✓ One (1) single power point to microwave provision.
- ✓ One (1) single power point to refrigerator provision.
- ✓ One (1) double power point to each room.
- ✓ One (1) additional double power point to Kitchen and Bedroom 1.
- ✓ LED downlights throughout excluding Kitchen & Garage.
- ✓ LED ceiling mounted light to Kitchen.
- ✓ LED Strip light with diffuser to Garage.
- ✓ External up/down lights to Front Façade.
- ✓ External bunker light to outside Laundry.
- ✓ Ceiling fans to all Bedrooms, Family Room and Outdoor Room.
- ✓ Photoelectric smoke detectors (direct wired to board with battery backup).
- ✓ NBN lead-in conduit (LIC) including double power point located in Garage, and one data point to Family Room.
- ✓ Two TV points, including roof mounted digital compatible TV antenna (if required).

STANDARD EXTERNAL FEATURES

- ✓ 2550mm nominal ceiling height (2550mm to upper floor on double storey home).
- ✓ Powder coated aluminium entry door frames in the standard Builders range of colours – sidelights if applicable in clear glass.
- ✓ Hume Newington XN1 clear glazed painted external front entry hinged door with Delf Valencia entrance knob set DK500VALPS and Delf double cylinder deadbolt DD550PS.
- ✓ Hume hollow core painted external hinged door with Delf Valencia entrance knob set DK500VALPS to external Garage door where applicable.
- ✓ Two (2) coat external paint system to external trim and doors using Dulux paints to Paint Manufacturers standard specifications.
- ✓ Feature contrasting external paint colour (if required)
- ✓ Two (2) external garden hose taps.

- ✓ External exposed aggregate concrete to Driveway and path/s, including gutter cut and excavation, and PVC grated drain across garage door opening (if required).
- ✓ Treated pine single side, butted paling fence to side and rear boundaries including return fences with one pedestrian gate.
- ✓ Poly-tek pillar letterbox including street numbers beside driveway.
- ✓ Garden bed up to 20m2 including mulch and plants with timber edging.
- ✓ River gravel to side/s of narrow lots (if required).
- ✓ Turf to balance inside property alignment and to front kerb to suit up to 400m2 Lot size. Excludes turf to nature strip of secondary street frontage (corner block or rear access) and will incur additional costs).
- ✓ Hills Supa Fold Compact wall mounted clothesline (FD45605).
- ✓ External builders house clean.
- ✓ Site clean after construction.

STANDARD INTERNAL FEATURES

- ✓ Carpet grade staircase with paint grade pine hand rail and black round steel balusters to stairs and first floor voids in high set homes.
- ✓ Flush panel painted internal hinged doors.
- ✓ Block-out roller blinds to all windows and sliding glass doors excluding Ensuite, Bathroom and Water Closet areas.
- ✓ Carpet in the Builders Silver range including standard foam underlay (refer working drawings).
- ✓ Delf Pomona DL505POMSC internal door lever handles in satin chrome finish to hinged internal doors.
- ✓ Vinyl sliding doors to all wardrobes.
- ✓ Vinyl sliding doors to linen cupboard (available to certain designs only, refer working drawings).
- ✓ White melamine shelving to pantry, linen, broom and robes.
- ✓ 90mm painted coved cornice, 42mm painted splayed architraves and 66mm painted splayed skirting.
- ✓ Three (3) coat internal paint system using Dulux Professional paints – 2 colours (one colour to walls and one colour to timber work) to Paint Manufacturers standard specifications.
- ✓ Two (2) coats to ceiling using Dulux Professional ceiling white paint to Paint Manufacturers standard specifications.
- ✓ Fujitsu 6.0kw reverse cycle split air-conditioning system for Living area.
- ✓ Internal builders house clean.

WARRANTIES

- ✓ Twelve-month maintenance period.
- ✓ Statutory structural guarantee period.
- ✓ Builders Lifetime Structural guarantee. (Subject to terms and conditions)

Metricon Homes Queensland Pty. Ltd. reserve the right to alter any of the above specifications due to continuing product development or availability of items.

Signature (1)

Date (1)

Signature (2)

Date (2)

The Breeze Series



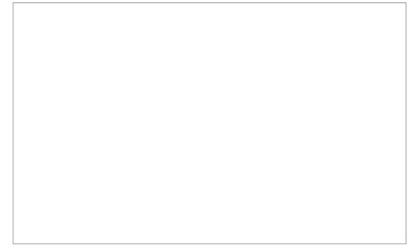
Scandinavian Internal Scheme ONE



KITCHEN/BATHROOM BENCHTOPS
STONE BENCHTOPS – Concrete



KITCHEN CABINETRY
LAMINEX Sublime Teak



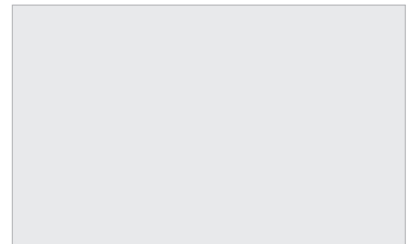
KITCHEN OVERHEAD COLOUR
FORMICA Crystal White



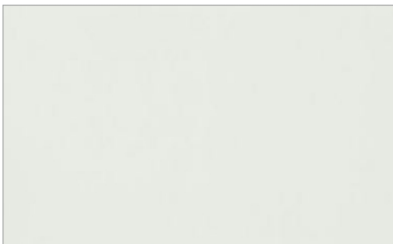
CABINETRY HANDLES
Hettich 9995481 (*builder's range*)



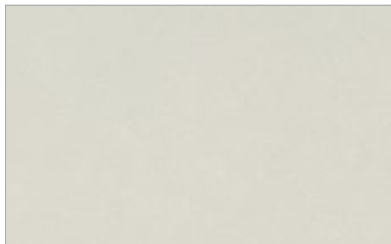
BATHROOM/ENSUITE CABINETRY
LAMINEX Sublime Teak



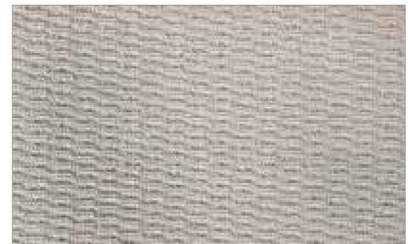
GENERAL PAINT (*walls and woodwork*)
DULUX Lexicon SW1E3



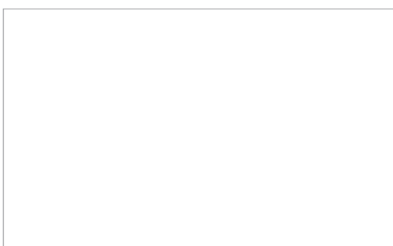
TILED SPLASHBACK (*kitchen*)
Matt White Tile 100 x 300mm



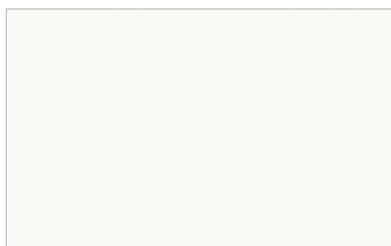
ALL FLOOR TILES (*including shower base, shower walls, bath hob and bath splash back*)
PORTIFINO Quartz Matt 450 x 450mm



CARPET
CARPET CALL Laguna Keys
Wild Rice (*silver range*)



VINYL SLIDERS*
BRADNAMS Glacier, Matt Silver Frame



ROLLER BLINDS* (*blockout to all windows and sliding glass doors, excluding wet areas*)
LOVELIGHT Zen Bounty



STAIN FINISH*
SIKKENS Light Oak (006)

Initial here _____ / _____

*If applicable. ^Two storey design staircase handrail and newel post. Images are for illustrative purposes only and while every effort has been made to correctly represent colours for this scheme, actual colours may vary. Materials, colours and brands are subject to availability and may be substituted if not available. Schemes may be changed without notice and external schemes are subject to developer covenant approval. This colour scheme is exclusive to The Breeze Series by Metricron and any approved customer variations may incur additional costs. For further information contact your property investment partner. QBCC 40992. 20201006

The Breeze Series



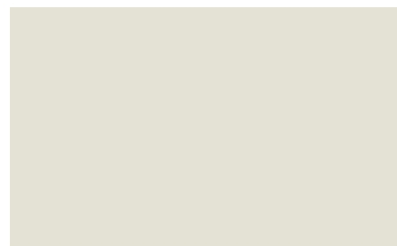
Scandinavian External Scheme ONE



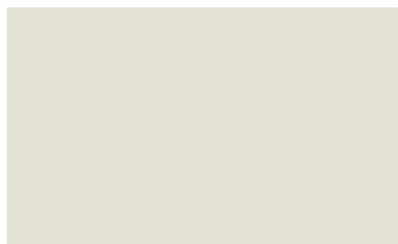
BRICKWORK
Austral Escape



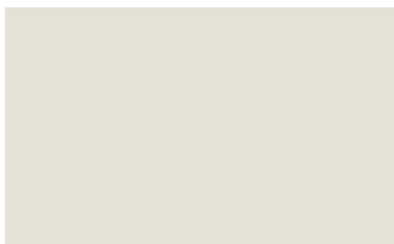
TILED ROOF*
MONIER Elabana Salt Spray



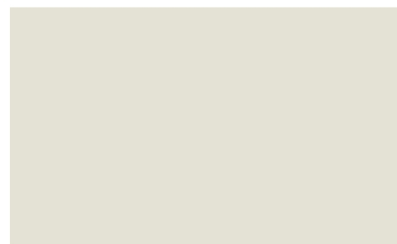
COLORBOND® ROOF
COLORBOND® Surfmist



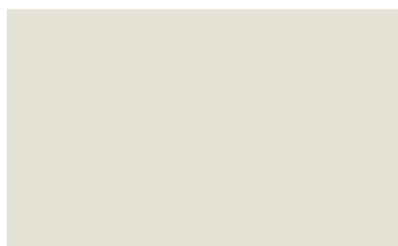
GUTTER & DOWNPIPES
COLORBOND® Surfmist



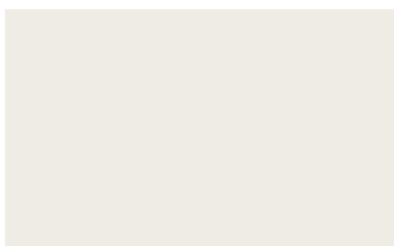
FASCIA & GARAGE DOOR
COLORBOND® Surfmist



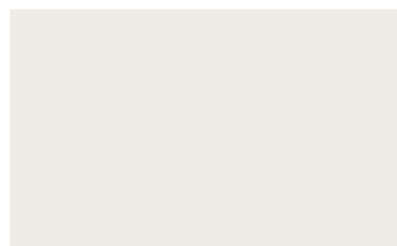
RAINWATER TANK & CAPPING*
COLORBOND® Surfmist



**WINDOW FRAMES
& SECURITY SCREENS***
BRADNAMS Surfmist



PAINTED FRONT ENTRY DOOR
DULUX Natural White SW1F4



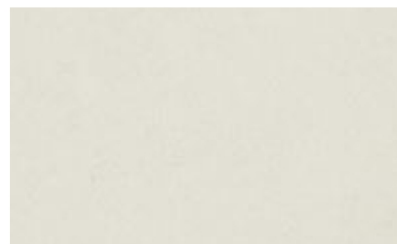
EAVES & EXTERNAL CEILINGS
DULUX Natural White SW1F4



INFILLS & WOODWORK & CLADDING*
DULUX Linseed S15B3



RENDER*
DULUX Linseed S15B3



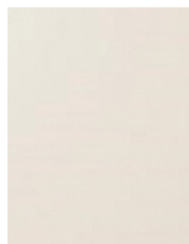
FACADE TILE* & FLOOR TILE
SIMPLICITY Limestone External
400 x 400mm



EXPOSED AGGREGATE*
BORAL Range 1 River Red



LETTERBOX*
POLYTEK Key Largo
(paint finish)



CLOTHESLINE*
Pebble Beach

Initial here _____ / _____

*If applicable. ^Safety screens to all side and rear opening window sashes and sliding doors. Fly screens to all front facade opening window sashes. Images are for illustrative purposes only and while every effort has been made to correctly represent colours for this scheme, actual colours may vary. Materials, colours and brands are subject to availability and may be substituted if not available. Schemes may be changed without notice and external schemes are subject to developer covenant approval. This colour scheme is exclusive to The Breeze Series by Metricon and any approved customer variations may incur additional costs. For further information contact your property investment partner. QBCC 40992. 20201006